

**GOVERNMENT OF INDIA
MINISTRY OF RAILWAYS
RESEARCH DESIGNS & STANDARDS ORGANISATION
MANAK NAGAR, LUCKNOW - 226 011**

No. EL/3.2.19

Dated 22.05.98/05.06.98

MODIFICATION SHEET NO. RDSO/WAM4/208

1. TITLE :

Modification of taking the tapping for magnetic unloader valves from the top of CP delivery pipe and provision of one extra `T` type strainer in series to improve the reliability of magnetic unloader valves.

2. OBJECT :

RDSO have issued Modification Sheet WAM4/195 dated Nov. `96 for provision of magnetic unloader valves in the pneumatic circuit of all Electric Locomotives by the Railways as well as CLW. In the 24th and 25th MSG meeting held at New Delhi and Secunderabad respectively, performance of magnetic unloader valves was discussed in detail. As reported by Railways. The performance of magnetic unloader valves is more or less satisfactory and there have been a marked improvement in the burning cases of MCPs in locomotives provided with magnetic unloader valves. However, there have been some cases of magnetic unloader valves being isolated by the drivers on line due to their sticking/mal-function. As per discussions held in the 25th MSG meeting, taking the tapping for magnetic unloader valves from the top of CP delivery pipe and provision of one `T` type strainer in series with magnetic unloader valves in line with WAG 6c locomotive will solve the above problem to a considerable extent.

3. WORK TO BE CARRIED OUT :

The proposed arrangement of magnetic unloader valves in Electric Locomotive is enclosed as Annexure I. The same is to be followed.

4. APPLICATION TO THE CLASS OF LOCOMOTIVE:

All Electric Locomotives.

5. MATERIAL REQUIRED:

- i) Pipe line of required size and length.
- ii) 3 Nos. `T` type strainers for 3x1000 LPM compressor configuration or 2 `T` type strainers for 2x2000 LPM compressor configuration.

6. MATERIAL REQUIRED SURPLUS:

None.

7. REFERENCE:

Discussions held in 25th MSG Meeting at Secunderabad.

8. MODIFICATION DRAWING:

Enclosed as Annexure-I.

9. AGENCY FOR IMPLEMENTATION:

CLW, All Electric Loco Sheds and Workshops.

10. DISTRIBUTION:

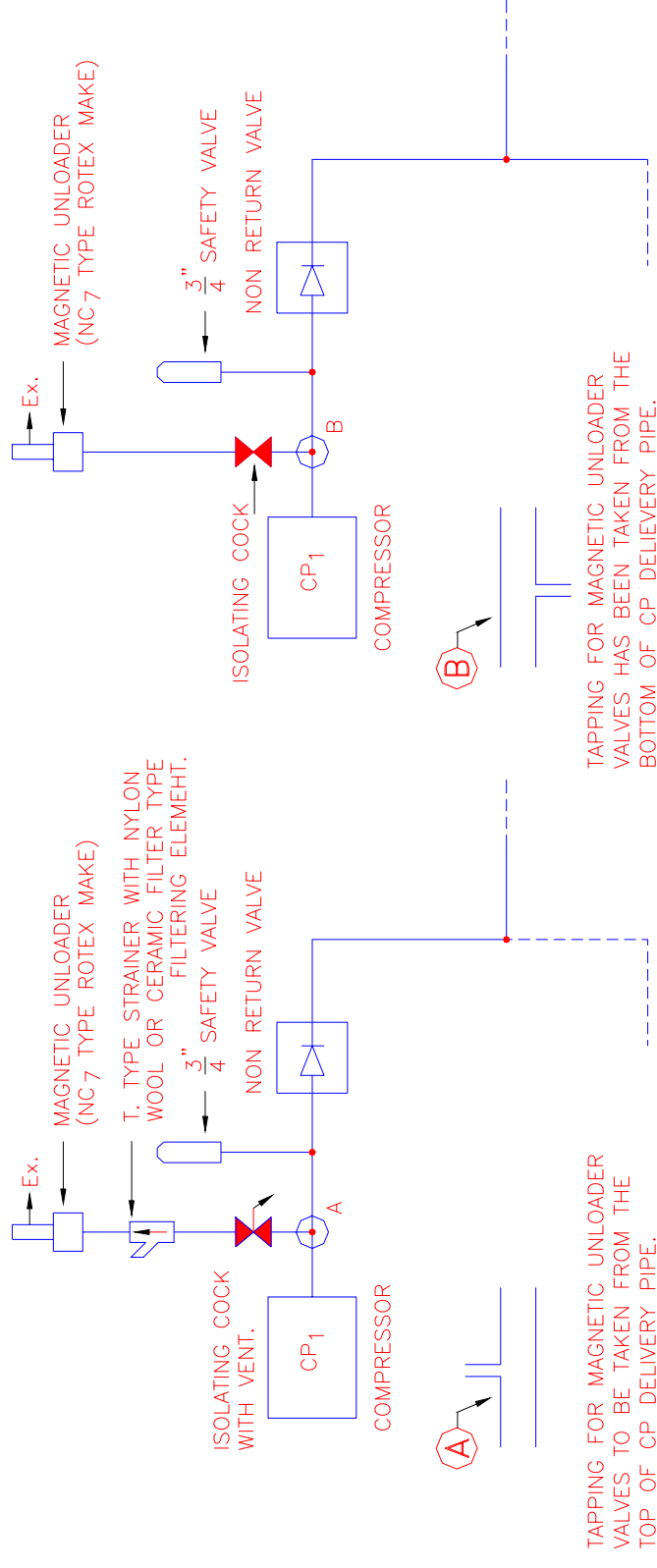
As per enclosed list.



Encl: As above

(O.H. Pande)
for Director General/Elect.

ANNEXURE – I



EXISTING ARRANGEMENT

MODIFIED ARRANGEMENT

NOTE:--

T- TYPE STRAINER IS TO BE CLEANED DURING EVERY SCHEDULE (1_A/1_B/1_C).

MODIFICATION OF RAISING THE HEIGHT OF MAGNETIC UNLOADER VALVE AND PROVISION OF ONE EXTRA T-TYPE STRAINER IN SERIES.

